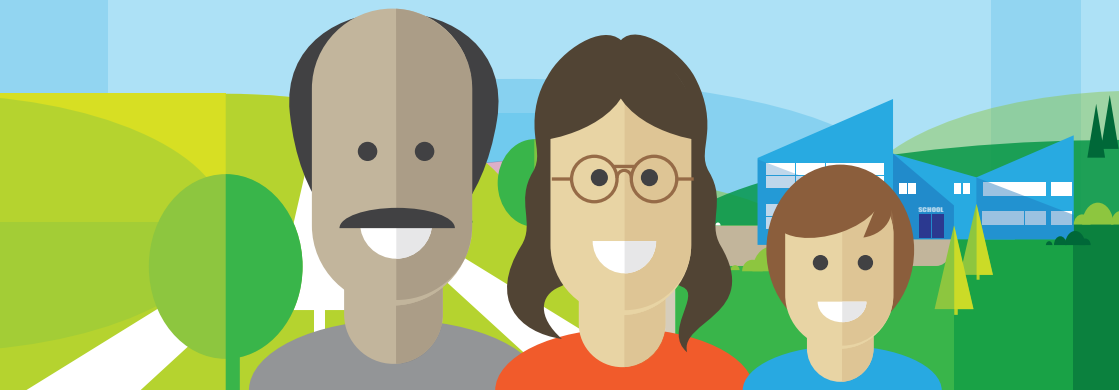




# Council Tax 2025-26



Information about Sheffield  
Council Tax



# 2

## Contents

<b>What do you get for your money? .....</b>	<b>3</b>
<b>Where the money goes and where the money comes from .....</b>	<b>6</b>
<b>What we spent 2024-2025 .....</b>	<b>8</b>
<b>What we will spend 2025-2026 .....</b>	<b>9</b>
<b>What are the valuation bands? .....</b>	<b>10</b>
<b>Save time, go online .....</b>	<b>11</b>
<b>How to pay your Council Tax .....</b>	<b>12</b>
<b>Changes in your circumstances .....</b>	<b>14</b>
<b>Are you entitled to pay less Council Tax? .....</b>	<b>15</b>
<b>Council Tax on empty homes and second properties.....</b>	<b>16</b>
<b>What to do if you cannot pay your bill .....</b>	<b>17</b>
<b>What happens if you don't pay your bill.....</b>	<b>18</b>
<b>Want to tell us what you think? .....</b>	<b>21</b>
<b>Where can I get help and information? .....</b>	<b>22</b>

## What do you get for your money?

**At Sheffield City Council we provide hundreds of different services for you and your community.**

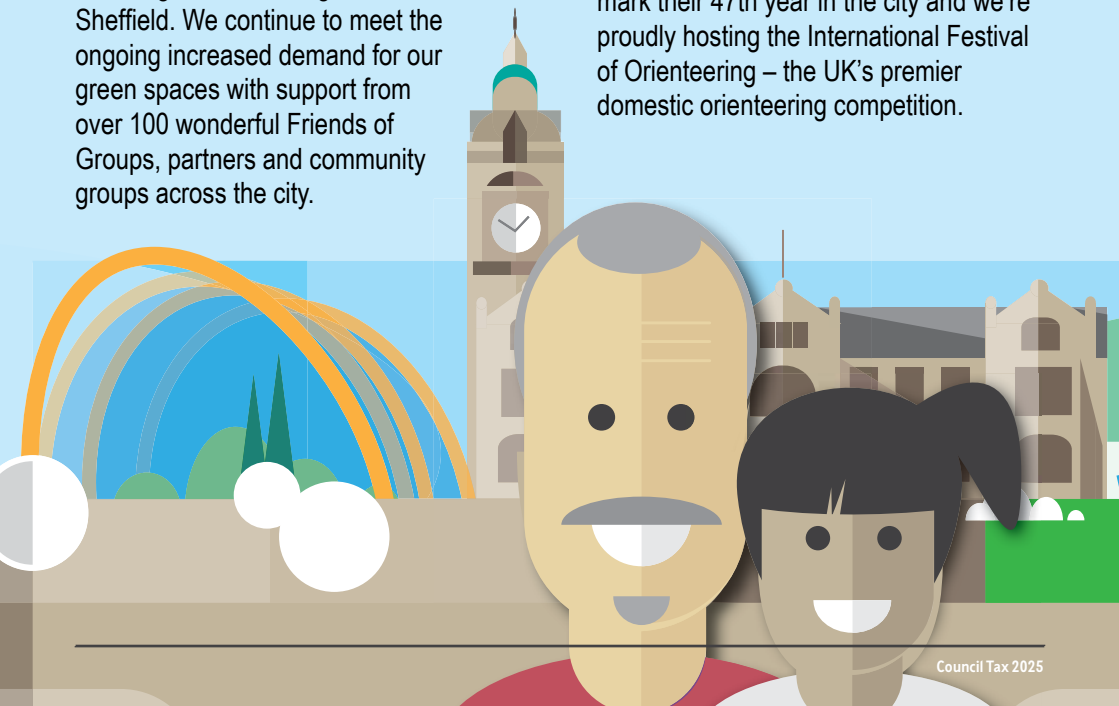
**This includes homes, support and care, safety and protection, recycling and collection services, and parks and events for you to enjoy.**

We manage more than 800 green spaces - including 95 parks, recreation grounds and gardens, more than 150 children's playgrounds, 15 bike tracks, 181 woodlands and 262 Nature Conservation sites - including 18 Green Flag sites - across Sheffield. We continue to meet the ongoing increased demand for our green spaces with support from over 100 wonderful Friends of Groups, partners and community groups across the city.

In 2024, Sheffield hosted world-class events, including the Tour of Britain's third leg and the Women's Olympic Ice Hockey Qualifiers.

Alongside securing high-profile events, Sheffield is home to its own festivals. 2024 saw the launch of Crossed Wires, a new podcast festival attracting talent from across the UK and beyond. The city also hosts DocFest, which celebrated its 30th year in 2023 and Tramlines, one of the UK's longest-running city music festivals.

We anticipate another packed events calendar this year. Sheffield is home to the World Snooker Championships, set to mark their 47th year in the city and we're proudly hosting the International Festival of Orienteering – the UK's premier domestic orienteering competition.



# 4

We empty 1,101 dual waste litter bins, maintain 14 fishing sites, mow the equivalent of nearly 18,000 football pitches of grass each year and have relaxed mowing regimes across 98.15ha of land for ecological benefit. We support over 16,500 tennis court bookings, provide catering facilities at 15 parks, oversee 81 allotment sites and manage three Visitor and Education Centres. Investing in our green spaces makes sure all Sheffield's communities have access to quality spaces that support physical and mental well-being.

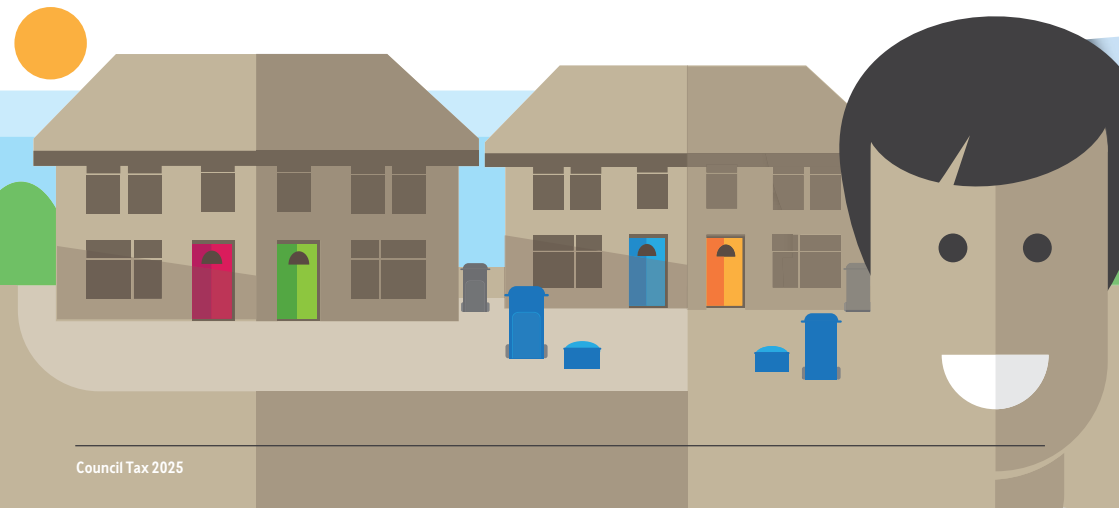
There are seven Local Area Committees (LACs) across the city. LACs give you the chance to share your opinion and contribute to positive changes in your community. LACs provide a direct link to your local councillors and give you opportunities to say what you would like to see improved in your area.

Our decarbonisation routemaps set out our plans to become a net zero organisation by

2030, aiming to reduce emissions by 95 per cent. To achieve this, we are introducing cleaner council-owned vehicles, improving walking, cycling and wheeling routes and expanding electric vehicle charging points.

So far, to enhance safety, we've installed 34 part-time 20mph zones outside Sheffield schools and supported 18 schools through our School Streets programme. We've also made active travel easier with a high-quality route between the city centre, Kelham Island and Neepsend, installed four of the five planned crossings in Crookes, Walkley, and Nether Edge and started construction on people-friendly street projects in the city centre, Tinsley, and Meadowhall.

Since introducing the Clean Air Zone (CAZ) two years ago, we've seen a significant reduction in nitrogen dioxide (NO<sub>2</sub>) levels across Sheffield. In 2023, NO<sub>2</sub> levels dropped by 16% within the CAZ and 21% across the wider district due to cleaner vehicles.



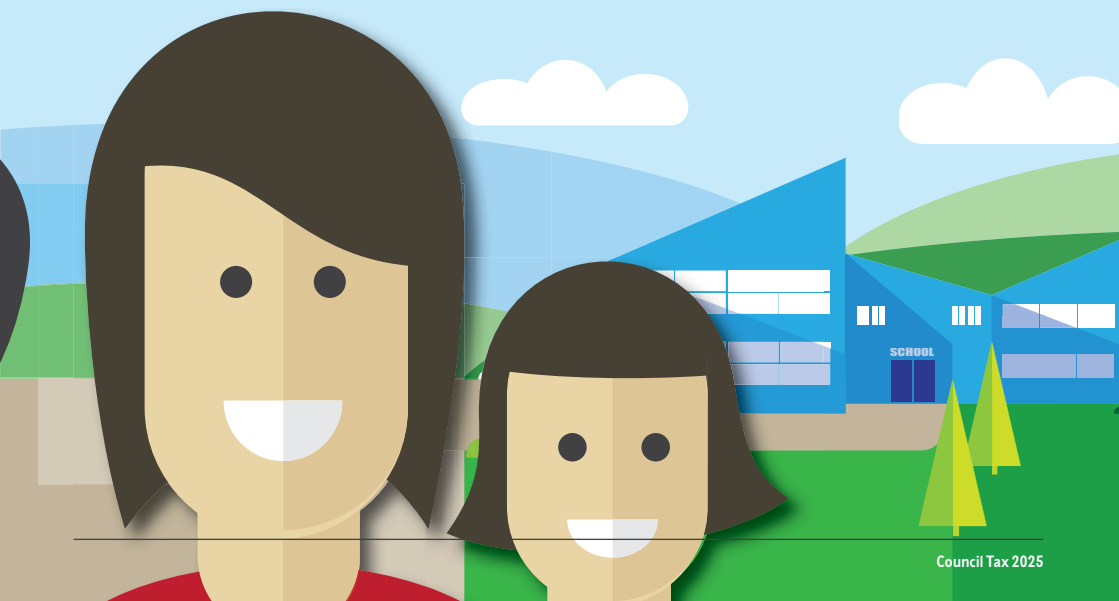
As part of our new Sport and Leisure Strategy we have committed to investing over £100m into sport and leisure facilities over the next 10 years, with rebuilds and refurbishments planned at a number of key leisure facilities, which will include improvements to swimming provision.

The Streets Ahead programme continues to improve the city's street scene with approximately 1,837 miles of pavement and 959 miles of road resurfaced, 66,738 streetlights replaced with LED units, and 233 new traffic signals installed to date across Sheffield since the contract began in 2012.

We've provided over £7m of support for households in need through our Household Support Fund programme, including over £3.8m in food vouchers and £3.2m in hardship grants. We've also supported over 300 Welcome Places across the city to deliver vital cost of living support, collectively benefitting over 70,000 residents who access their services.

Through our income maximisation and cost-of-living campaigns, we've helped residents access support for food, utilities, debt and benefits. This includes a targeted campaign reaching over 7,500 residents identified as potentially eligible for Pension Credit, providing them with information to support their claims.

We're delivering a number of regeneration projects across the city centre. As part of the £470m Heart of the City redevelopment, we've welcomed new retailers and transformed the Grade II listed Leah's Yard into a hub for independent businesses. The Cambridge Street Collective food hall is now open, alongside the Radisson Blu Hotel on Pinstone Street, bringing more life to the city centre. Plans for the iconic Citadel building are progressing, while Fargate's rejuvenation is in its final phase, featuring enhanced pedestrian areas and over 900m<sup>2</sup> of new planting. Work on Event Central is set to begin this year and work to reinvigorate Castlegate, the birthplace of Sheffield continues.



# 6

## Where does my money go and where does the money come from?

Sheffield City Council spends around £1.8 billion a year providing a wide range of services for approximately 600,000 citizens of Sheffield.

Our services are paid for from different sources.

- 43% comes from Central Government
- 28% comes from charges for services (such as Council house rents and entrance fees)
- 12% comes from Locally Retained Business Rates including Top Up Grant
- 17% comes from Council Tax and the Adult Social Care Precept

Of the £1.8 billion service expenditure, approximately £1.2 billion is funded via specific grants, fees and charges. This expenditure is therefore not funded via the collection of Council Tax.

The remaining £564 million of service expenditure, which isn't funded by specific grants, fees, charges or reserves is financed as below:

- 53% comes from Council Tax
- 38% comes from locally retained business rates including Top Up Grant
- 9% comes from Central Government as Revenue Support Grant (RSG)

Council Tax, business rates and RSG are general funds i.e. they do not fund specific services. Therefore 53% of these services are funded via Council Tax and the Adult Social Care Precept.

This split is reflected in the table below and shows how much of a monthly Council Tax payment goes towards these services.

This is based upon a Band A household in 2025/26 (58% of Sheffield households are in Band A).

Council services	Amount each month for each household	%
Education	£5.70	5%
Children's Social Care	£25.78	23%
Adult Social Care	£34.48	31%
Highways, Roads and Transport Services*	£11.55	10%
Planning and Economic Development	£1.93	2%
Leisure and Culture	£6.04	5%
Environmental Health	£1.39	1%
Emptying Your Bins, Disposal and Recycling	£6.78	6%
Housing **	£4.44	4%
Other Services	£7.28	6%
Capital Financing Costs	£7.35	7%
<b>Total</b>	<b>£112.72</b>	

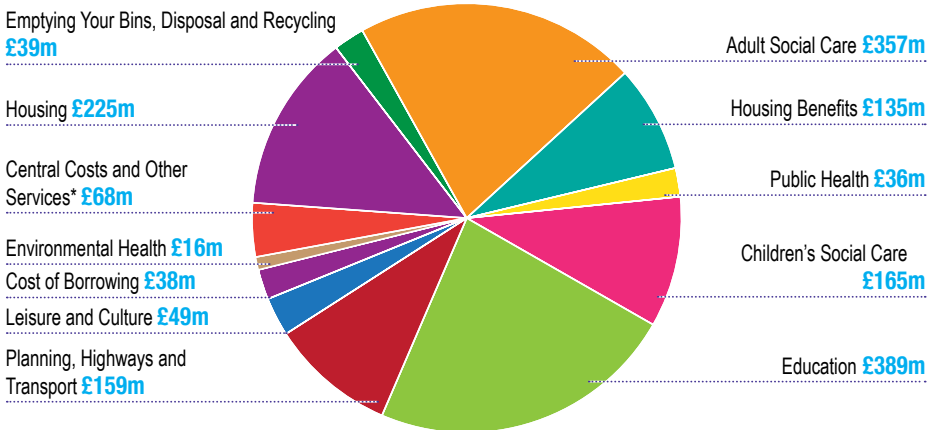
\* Includes Sheffield City Region Combined Authority Transport Levy, which provides subsidised bus and rail services across South Yorkshire

\*\* Includes Housing Benefit shortfall

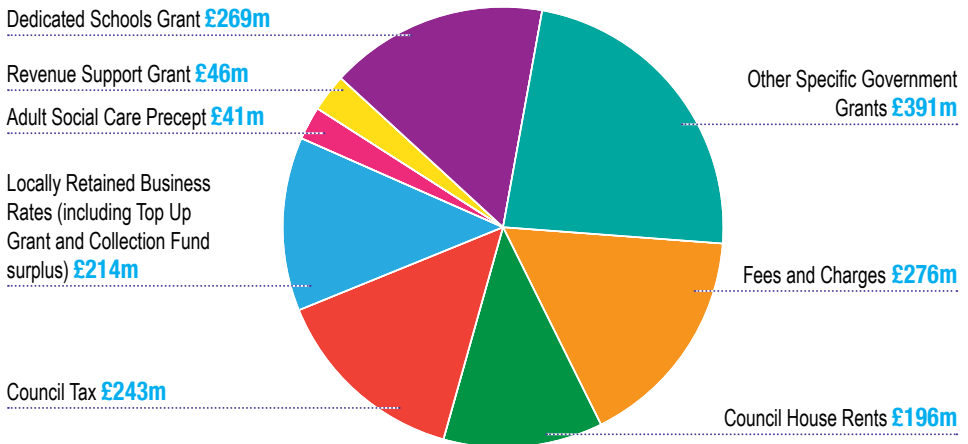
# 8

## What we spent 2024 - 2025

### Planned Spend for 2024 - 2025 • Gross Expenditure £1,676m



### Where the Money Comes From 2024 - 2025 • Gross Income - £1,676m

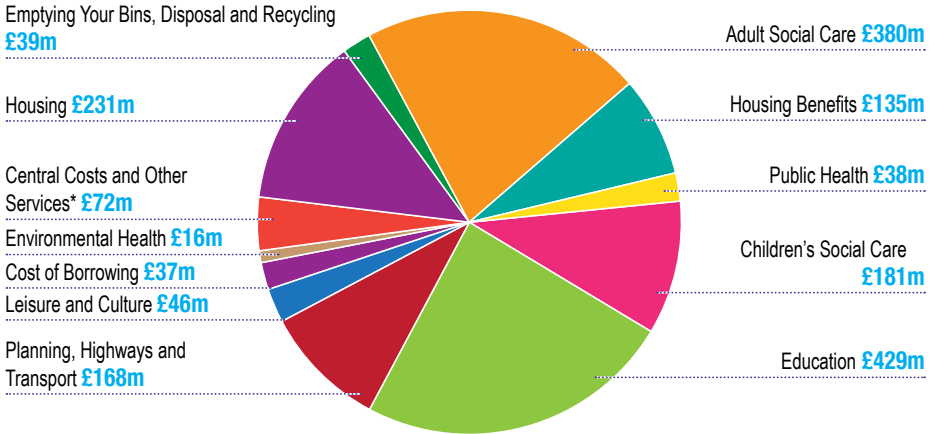


\* We spend £68m on central costs and other services including: Pension costs and Support Service costs such as communications, finance, information technology, legal, managing people, policy and performance, procurement, transport services and property.

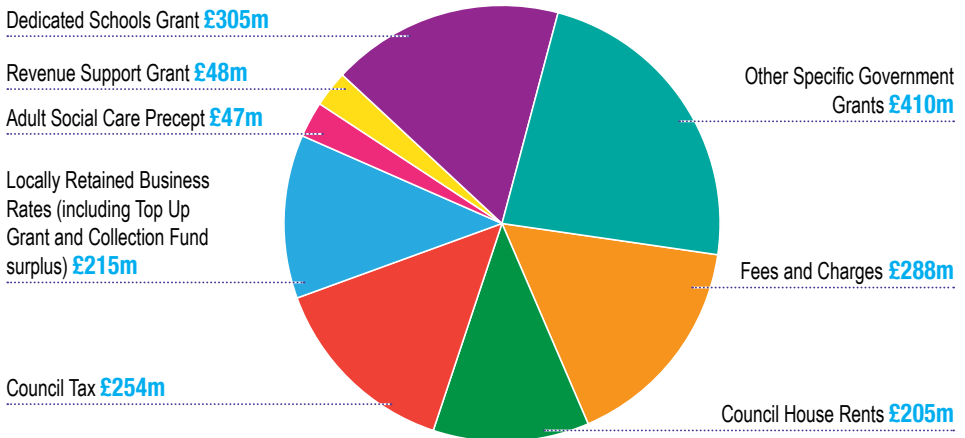


## What we will spend 2025 - 2026

### Planned Spend for 2025 - 2026 • Gross Expenditure £1,772m



### Where the Money Comes From 2025 - 2026 • Gross Income - £1,772m



\* We spend £72m on central costs and other services including: Pension costs and Support Service costs such as communications, finance, information technology, legal, managing people, policy and performance, procurement, transport services and property.

# 10

## What are the valuation bands?

Further information on these and other discounts is available at [www.sheffield.gov.uk/council-tax/council-tax-discounts](http://www.sheffield.gov.uk/council-tax/council-tax-discounts)

Your property has been placed in one of the following bands - based on the value of your house on 1 April 1991.

### Appeals

To appeal against, or enquire about your valuation band, contact:

Valuation Office Agency

Website: [www.gov.uk/council-tax-bands](http://www.gov.uk/council-tax-bands)

Phone: 03000 501501

You can also appeal against your Council

Tax if you think:

- you are not the person responsible for paying the Council Tax bill
- you should receive a discount, exemption or disablement relief that has been refused
- your bill has been incorrectly calculated

Further information can be found on [www.sheffield.gov.uk/home/council-tax/appeal-my-bill](http://www.sheffield.gov.uk/home/council-tax/appeal-my-bill) or email: [counciltax.liability@sheffield.gov.uk](mailto:counciltax.liability@sheffield.gov.uk)

Valuation band	Range of value	City Council* (£)	Police (£)	Fire (£)	Total (£)
A	Up to and including £40,000	1,352.66	176.69	60.03	1,589.38
B	£40,001 to £52,000	1,578.10	206.14	70.04	1,854.28
C	£52,001 to £68,000	1,803.55	235.59	80.04	2,119.18
D	£68,001 to £88,000	2,028.99	265.04	90.05	2,384.08
E	£88,001 to £120,000	2,479.88	323.94	110.06	2,913.88
F	£120,001 to £160,000	2,930.76	382.83	130.07	3,443.66
G	£160,001 to £320,000	3,381.65	441.73	150.08	3,973.46
H	More than £320,000	4,057.98	530.08	180.10	4,768.16

\* This figure includes the Adult Social Care Precept.

## Save time go online

### Manage your Council Tax account online

Did you know that you can manage your Council Tax online by registering to use the online self-service facility?

This means that you can view and manage your account online at a time that is convenient to you - saving you time, effort and money.

### What you can do using Self Service

- See how your Council Tax bill has been calculated
- Check payments you have made
- Sign up to e-billing where you will receive your Council Tax bill by email instead of by post
- Look at any balance(s) outstanding
- Request a payment arrangement
- Check the amounts you need to pay
- Apply to pay by Direct Debit
- Tell us when you change your address
- View your Housing Benefit or Council Tax Support details
- Landlords can view details of Housing Benefit awards.

### How to access Self Service

To register and for more information on Self Service, please visit [www.sheffield.gov.uk/council-tax](http://www.sheffield.gov.uk/council-tax)

When you register for Self Service you will need your Council Tax account number and/or your Housing Benefit/ Council Tax Support reference number.

# 12

## How to pay your Council Tax

Payments should be received on or before the date they are due. Please allow up to five working days for your payment to reach your account.

### Direct Debit

The easiest way to pay is to set up a Direct Debit - all you need is an account with a bank or building society. You can choose to pay on 1st, 7th, 15th, 23rd or last day of the month.

As a customer, the Direct Debit Guarantee protects you against payments made in error or fraudulently. This means Direct Debit is the safest payment method in the UK.

Apply to pay by Direct Debit by using the online Self Service facility at [www.sheffield.gov.uk/council-tax/pay-council-tax](http://www.sheffield.gov.uk/council-tax/pay-council-tax) or phone 0114 273 6633.

### By Debit card - (24 hours a day, 7 days a week)

Phone our telephone payment service on 0114 273 5249 or visit [www.sheffield.gov.uk/council-tax](http://www.sheffield.gov.uk/council-tax)



### **By web or Telephone Banking**

Tell your bank the amount you're paying and payment can be made directly to the Council, our details are: Barclays Bank, Sort Code: 20-77-18, Account Number: 03027376, quoting your Council Tax account number.

### **At the Post Office®**

Pay by **cash, cheque or debit card** at any Post Office® using your barcoded bill. Make cheques payable to Post Office Limited, and please keep your receipt.

### **By PayPoint**

Pay by **cash only** at any PayPoint outlet using your barcoded bill. Please keep your receipt.



# 14

## Changes to your circumstances

You must tell us straight away about changes which may affect your Council Tax bill. In particular if you are receiving Single Person Discount you must tell us if any children reach the age of 18 or if any other adult moves into the property.

You must also notify the Council if you change your address.

You can do this by:

- Visiting [www.sheffield.gov.uk/council-tax](http://www.sheffield.gov.uk/council-tax)  
You can complete a form online using the Self Service facility (there is more information on Self Service on page 13)
- Emailing about your change of circumstance to [council.tax@sheffield.gov.uk](mailto:council.tax@sheffield.gov.uk)
- Phoning us on 0114 273 6633

We have a duty to make sure that any Council Tax discounts, including Council Tax Support are claimed legally.

We may get information from others to check the information you give us and to improve our services.

We may give information to other organisations as the law allows, for example to prevent and detect crime. To find out more, please see our website at [www.sheffield.gov.uk/council-tax](http://www.sheffield.gov.uk/council-tax)

### Penalties

If your bill shows a reduction in the amount of Council Tax you have to pay, including any reduction awarded under the Council Tax Support Scheme, and your circumstances change which means you may no longer be entitled to receive this reduction, you must tell us within 21 days from the date of change.

If you do not tell us, this may lead to prosecution and a fine of up to £280.

For more information on any reduction shown on your bill, to apply for a reduction, or to tell us you are no longer entitled to a reduction please visit:

[www.sheffield.gov.uk/council-tax/council-tax-discounts-exemptions](http://www.sheffield.gov.uk/council-tax/council-tax-discounts-exemptions)

# Are you entitled to pay less Council Tax?

Council Tax Support replaced Council Tax Benefit in 2013. [www.sheffield.gov.uk/home/benefits/council-tax-support](http://www.sheffield.gov.uk/home/benefits/council-tax-support) it provides help for taxpayers on low incomes. If you are entitled to Council Tax Support the amount you have to pay will be reduced, although if you are not a pensioner you will still have to pay some council tax each month. For more information and to apply for Council Tax Support visit [www.sheffield.gov.uk/home/benefits/council-tax-support](http://www.sheffield.gov.uk/home/benefits/council-tax-support)

## Disabled people

If you, or someone who lives in your household, has a disability and your home has been adapted to meet the needs of the disabled person, you may qualify for a reduction in Council Tax.

## Single-person discount

If you live on your own, you may be entitled to a 25% reduction on your bill. If you think you may qualify for any of the above discounts, please contact the Council Tax office for an application form or visit [www.sheffield.gov.uk/council-tax/council-tax-exemptions](http://www.sheffield.gov.uk/council-tax/council-tax-exemptions) and complete the online application form, or email [council.tax@sheffield.gov.uk](mailto:council.tax@sheffield.gov.uk).

## Other discounts

You may be able to get a discount if you, or someone who lives with you, is:

- 1 a full-time student, student nurse or apprentice youth-training trainee
- 2 severely mentally impaired
- 3 a care worker on low pay, not employed for more than 24 hours a week, living where the care is given
- 4 caring for someone on state benefit - for more than 35 hours a week - who is not your husband or wife, partner, or child under 18
- 5 an 18 or 19 year-old who is at school or has just left school
- 6 staying in hostels or night shelters
- 7 living in hospital care, a care home or an independent hospital
- 8 in prison - except those in prison for non-payment of Council Tax or a fine
- 9 a member of a religious community that meets certain conditions

# 16

## Council Tax on empty properties and second homes

We want to encourage owners of empty properties to bring them back into use as homes for the people of Sheffield. This is why there's a Council Tax premium applied to empty properties and second homes.

### Council Tax and long-term empty properties

If you own a property that's been empty and unfurnished for 12 months or more, you could be charged additional Council Tax. This is called the Long-Term Empty Premium. The Council Tax premium increases the longer the property has been empty. This means properties that are empty and unfurnished for:

- 12 months to 60 months have an increase of 100%
- 60 months to 120 months have an increase of 200%
- 120 months or more have an increase of 300%

### Council Tax and second homes

From 1 April 2025, if you own a property that's furnished but not used as a primary residence by you or anyone else, you'll be liable for an additional 100% Council Tax charge. This is called the Second Homes Premium.

### Exceptions

There are exceptions to the long-term empty premium and the Second Homes Premium, for example, where your property is actively being marketed for sale or to let (12-month limit)

A more detailed list of exemptions can be found at

[www.sheffield.gov.uk/council-tax/council-tax-empty-properties-second-homes](http://www.sheffield.gov.uk/council-tax/council-tax-empty-properties-second-homes)

If you believe your property should not attract one of these premiums please contact [ltepqueries@sheffield.gov.uk](mailto:ltepqueries@sheffield.gov.uk).



The Council also has the discretion to reduce liability for Council Tax in relation to individuals, or groups of individuals, where, after due consideration, it feels it

is appropriate to do so, for example where a taxpayer is experiencing exceptional hardship.

---

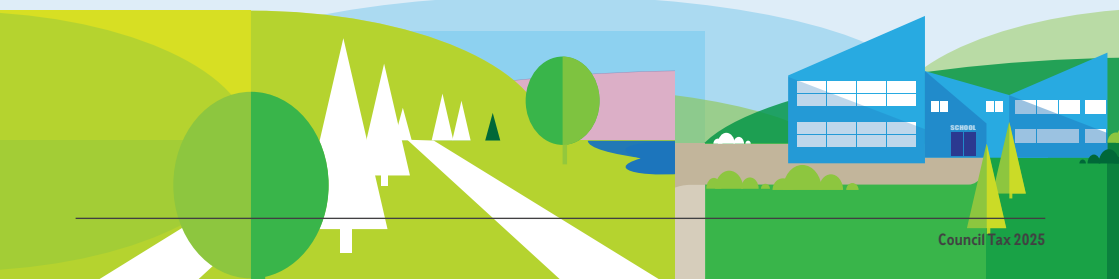
## What to do if you cannot pay your bill

The Council will take a firm but fair approach to those who do not pay their Council Tax. We will take a robust approach to those who can but won't pay, and will ensure we take a sympathetic approach to those who are genuinely struggling to pay.

To this end we have established a [www.sheffield.gov.uk/home/benefits/discretionary-housing-payment](http://www.sheffield.gov.uk/home/benefits/discretionary-housing-payment) to help those who are in receipt of

[www.sheffield.gov.uk/home/benefits/council-tax-support](http://www.sheffield.gov.uk/home/benefits/council-tax-support) and are in severe financial hardship.

We urge anyone who is having genuine difficulties in paying to contact us without delay. If people persist in not paying, recovery action will be taken which can lead to significant costs being added to their bill.



# 18

## What happens if you don't pay your bill

The recovery process is:

- If you miss a payment you will receive a reminder final notice that payment is due. More information at: [www.sheffield.gov.uk/home/council-tax/reminders-final-notices](http://www.sheffield.gov.uk/home/council-tax/reminders-final-notices)
  - If you do not bring your payments up to date or make a repayment arrangement, you may receive a final notice. More information at: [www.sheffield.gov.uk/home/council-tax/reminders-final-notices](http://www.sheffield.gov.uk/home/council-tax/reminders-final-notices).
  - If you do not respond to the reminder or final reminder you will receive a summons to attend a hearing where we will ask for a Liability Order to be granted. At this stage, costs will be added to the amount you owe.
  - If you receive a summons you will have lost the automatic right to pay by instalments and you will have to pay the full amount of Council Tax.\*
- If the Court grants a Liability Order the Council will be able to take further recovery action including:
    - Deducting money from your benefits
    - Deducting money from your earnings
  - Instructing an Enforcement and Collection Agency (previously bailiff) to collect your debt
  - Placing a Charging Order on your property
  - Issuing Bankruptcy proceedings
  - Committal to Prison

Some of these actions can add significant costs to how much someone has to pay.

If you are struggling to pay your Council Tax please contact us without delay, so we can try and help you avoid incurring additional recovery costs.

If you need any independent help or advice please contact one of the city's advice agencies.

**\* We would strongly advise you to contact us as soon as you receive a summons to discuss your arrears.**

At this point if you are unable to pay the amount in full we will try and work with you to agree a repayment plan. If a repayment plan is agreed we will still request a Liability Order as this will allow us to take further recovery action if the repayment arrangement is not maintained.

If you do not think you are liable to pay Council Tax, you can attend court and put your case before the Magistrate. However, if you accept you are liable for the Council Tax that is owed, and you make a repayment arrangement prior to the court date, you do not need to attend court.

If you have claimed a Council Tax discount, relief or exemption or Council Tax Support you will already have accepted liability for Council Tax.

For more information about what happens if you don't pay on time and the Council's Recovery Policy see [www.sheffield.gov.uk/home/business/business-rates](http://www.sheffield.gov.uk/home/business/business-rates)

## Data Protection

### **Why are we processing your information?**

The Council is required by law to process your personal data as part of our obligations under the Local Government Finance Act 1992 to collect Council Tax.

### **Who will we share your information with?**

The Council will not share your information with any third party other than those with a legal entitlement to it.

The Council is under a duty to protect the public funds it administers and we may use the information we collect for the prevention and detection of fraud.

For this reason, we may obtain information from the Credit Referencing Agencies and we may share your information with other bodies responsible for auditing or administering public funds.

We do share Council Tax data with the Cabinet Office for data matching as part of the National Fraud Initiative. More details can be found by visiting [www.gov.uk/government/collections/national-fraud-initiative](http://www.gov.uk/government/collections/national-fraud-initiative)

### **What are your rights?**

You have rights under Data Protection law. For further details about your rights, the contact details of our Data Protection Officer and your right to make a complaint about how we process your personal information, please see our Data Protection web page [www.sheffield.gov.uk/utilities/footer-links/privacy-notice](http://www.sheffield.gov.uk/utilities/footer-links/privacy-notice)

## Want to tell us what you think?

### To make a suggestion or complaint:

#### Online:

[www.sheffield.gov.uk/your-city-council/  
contact-us](http://www.sheffield.gov.uk/your-city-council/contact-us)

#### Telephone:

0114 273 4567

#### Write:

Customer Services  
Sheffield City Council  
Town Hall  
Pinstone Street  
Sheffield  
S1 2HH

### Or do it in person at one of our offices:

We will always try to resolve your complaint through problem solving, and will aim to do this in three working days.

If we need to carry out a more in depth investigation, we will write to you and let you know what is happening within 28 days.

## Where can I get help and information?

Information on how to pay your Council Tax is on the back of your bill.

To register for Self Service visit [www.sheffield.gov.uk/home/council-tax](http://www.sheffield.gov.uk/home/council-tax)

You can get more help and information by:

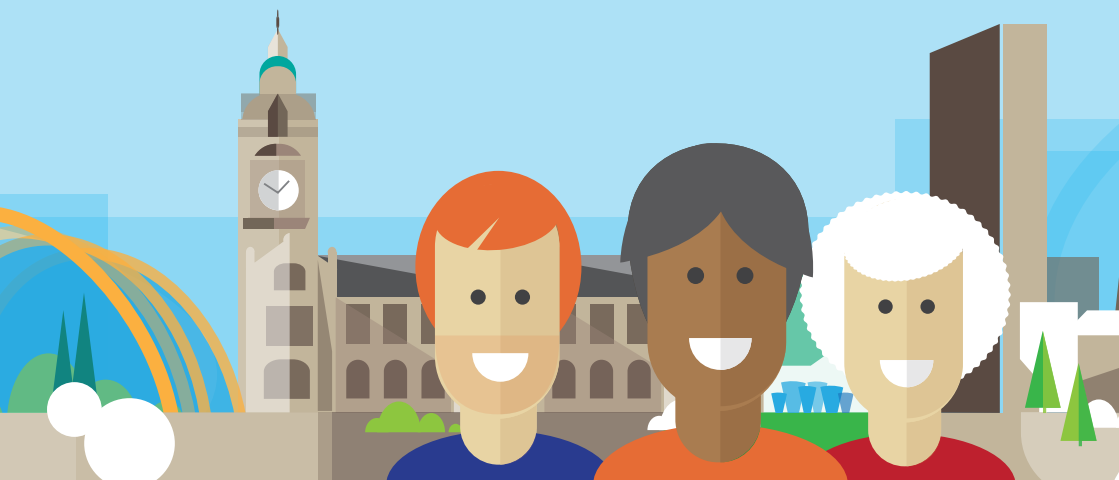
- **visiting** [www.sheffield.gov.uk/home/council-tax](http://www.sheffield.gov.uk/home/council-tax)
- **phoning** the Council Tax helpline on 0114 273 6633
- **emailing** [council.tax@sheffield.gov.uk](mailto:council.tax@sheffield.gov.uk)
- **writing** to Sheffield City Council, PO Box 1310, Sheffield S1 1UY

If you would like a hard copy of this leaflet please send a request in writing to:

Sheffield City Council  
Council Tax  
PO Box 1310  
Sheffield  
S1 1UY

**Emails:** [council.tax@sheffield.gov.uk](mailto:council.tax@sheffield.gov.uk)

# Council Tax 2025-26



We can provide copies of the wording of this leaflet in other languages, in large print, in Braille and on audio tape. Please contact 0114 273 5538.

Sheffield City Council  
[www.sheffield.gov.uk](http://www.sheffield.gov.uk)



When you have finished with  
this document please recycle it